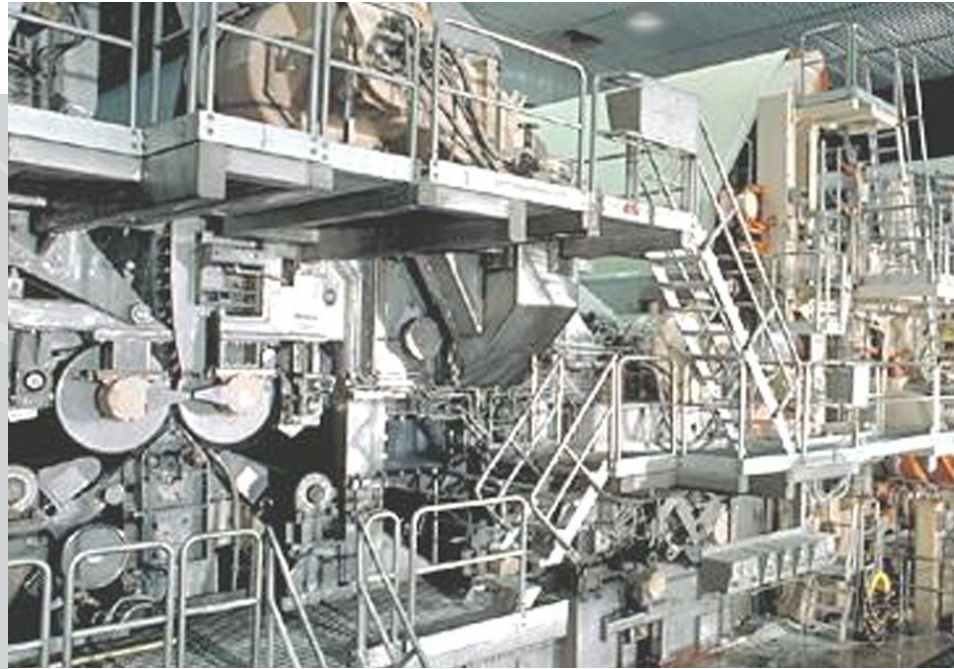




ZetaLube

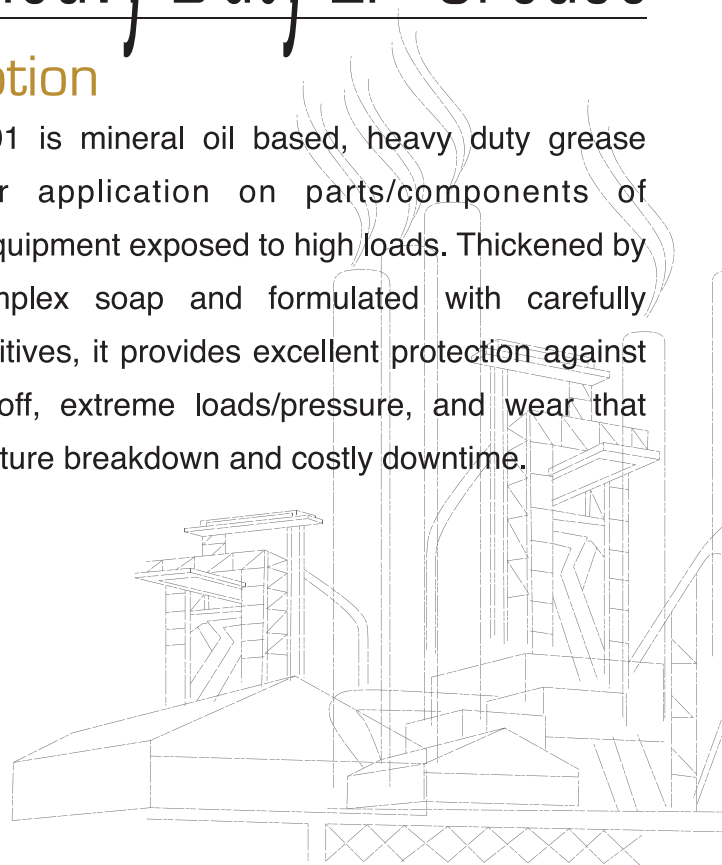
A New Lubricity Dimension
Evolved From Experience



ZetaLube 201 Heavy Duty EP Grease

Description

ZetaLube 201 is mineral oil based, heavy duty grease suitable for application on parts/components of machinery/equipment exposed to high loads. Thickened by Lithium Complex soap and formulated with carefully selected additives, it provides excellent protection against water wash-off, extreme loads/pressure, and wear that cause premature breakdown and costly downtime.



MAGNA INDUSTRIAL CO. LIMITED
Total Quality Maintenance

www.magnagroup.com

Magna Industrial reserves the right to modify or change this product for purpose of improving its performance characteristics ©2009 Magna Industrial Co. Limited.

The ZetaLube trade mark is the property of ITW, Inc. and is used under licence by Magna Industrial Co. Limited



Features and Benefits

- Excellent load-carrying capacity provided by viscous base fluid and special EP additive to protect machinery/equipment against high loads, high pressure and shock loads.
- Strong resistance to corrosion and oxidation.
- Outstanding protection against water wash-off – extra protection to machinery/equipment against rust and corrosion caused by moisture.
- Unparalleled film strength and stiffness needed to protect parts against heavy loading and severe impact.
- High level of chemical and thermal resistance for machinery/equipment exposed to harsh operating conditions in heavy industries such as steel and paper & pulp mills.
- Versatile heavy duty applications for maintenance professionals to reduce inventory level.
- Extends service life of machinery/equipment and reduces maintenance costs.

Recommended Applications

- Lubrication of heavy-duty industrial machineries and equipment.
- Lubrication of bearing parts exposed to high temperature and extra-load conditions in water-intensive industrial operations, e.g. steel mills, paper/pulp/board mills.
- Commercial automotive bearing parts exposed to frequent water washout and marine equipment.

Typical Data

TEST	ASTM TEST METHOD	TEST RESULT
Colour	Visual	Green
Texture		Smooth & Tacky
Type of Thickener		Lithium Complex
NLGI Grade		2
Worked Penetration @25°C	D-217	265-290
Viscosity in cSt of Base Fluid	@40°C	455
	@100°C	30
Viscosity index for Base Fluid	D-2270	110
Flash Point for Base Fluid (°C)	D-92	254
Pour Point for Base Fluid (°C)	D-97	-10
Dropping Point (°C)	D-2265	260+
Operating Temperature Range (°C)		-20 to +175 (intermittent up to 200)
Timken OK Load (Kg)	D-2509	23
4-Ball EP Performance Weld Load (Kgf)	D-2596	320
Water Washout % Loss	D-1264	4%

The data shown is typical value and may vary.

Pack-size

15 Kg Pail

Authorized Distributor