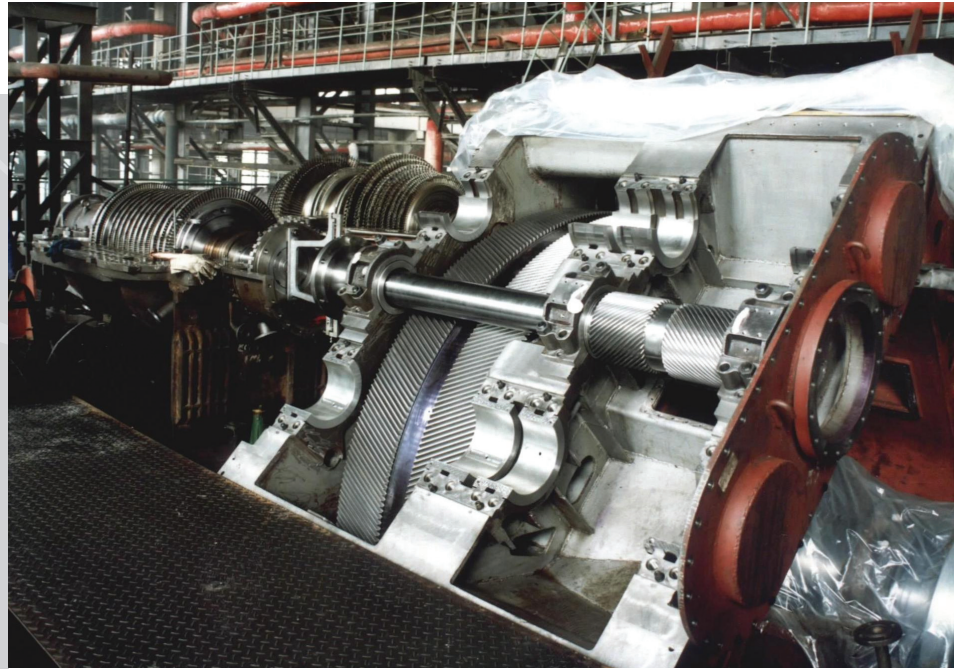




**ZetaLube**

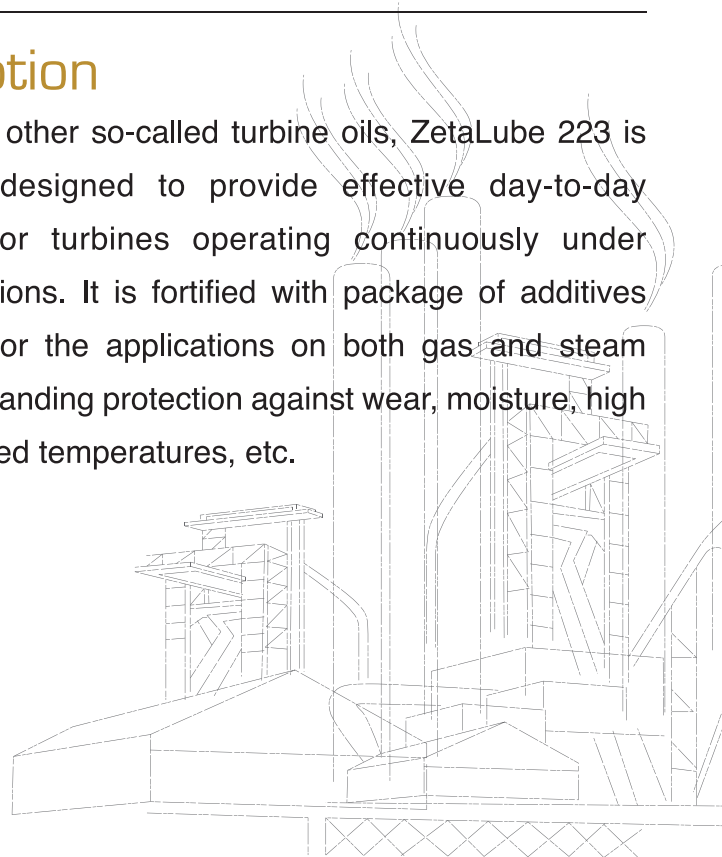
A New Lubricity Dimension  
Evolved From Experience



# ZetaLube 223 Turbine Oil

## Description

Unlike many other so-called turbine oils, ZetaLube 223 is specifically designed to provide effective day-to-day lubrication for turbines operating continuously under harsh conditions. It is fortified with package of additives engineered for the applications on both gas and steam turbines demanding protection against wear, moisture, high loads, elevated temperatures, etc.



**MAGNA INDUSTRIAL CO. LIMITED**  
*Total Quality Maintenance*

[www.magnagroup.com](http://www.magnagroup.com)

Magna Industrial reserves the right to modify or change this product for purpose of improving its performance characteristics ©2009 Magna Industrial Co. Limited.

The ZetaLube trade mark is the property of ITW, Inc. and is used under licence by Magna Industrial Co. Limited





## Features and Benefits

- Good thermal and oxidation stabilities - eliminates build-up of sludge and varnish which are detrimental to the performance of turbine engines.
- Excellent wear protection even at high temperatures to which most turbine engines are exposed.
- Fortified with anti-corrosion and anti-foam additives to provide necessary protection to the turbines operating in humid and harsh conditions.
- Offers outstanding film protection and strength to turbines bearing high loads.
- Provides reliable and clean lubrication to reduce maintenance costs, and more importantly, to eliminate unplanned downtime.

## Recommended Applications

- For lubrication of steam and gas turbines requiring ISO VG 68 or ISO VG 100 turbine oils.
- Can also be applied to lubricate compressors and pumps.
- General non-EP plant lubrication.

## Typical Data

TEST	ISO VG 68	ISO VG 100
Colour	Amber	Amber
Density, kg/L @ 20°C	0.871	0.875
Viscosity, cSt @ 40°C	68	100
Flash Point (Open Cup), °C	>230	>230
Pour Point, °C	-11	-10
Oxidation Characteristics – Hours to TAN 2.0	1500	1500
Copper Strip Test, 100°C, 3 hours	>1a	>1a

The data shown is typical value and may vary.

## Pack-size

205 Litre Metal Drum & 20 Litre Plastic Container

Authorized Distributor